

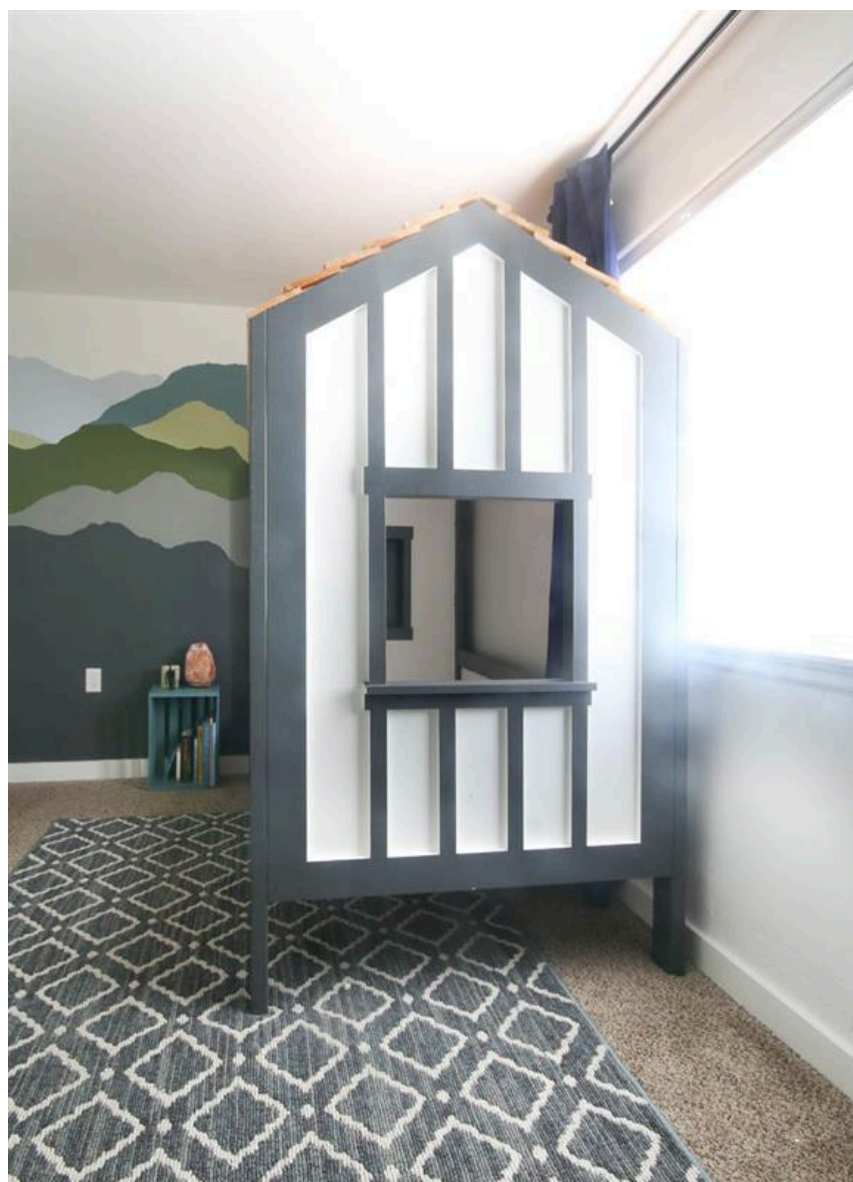
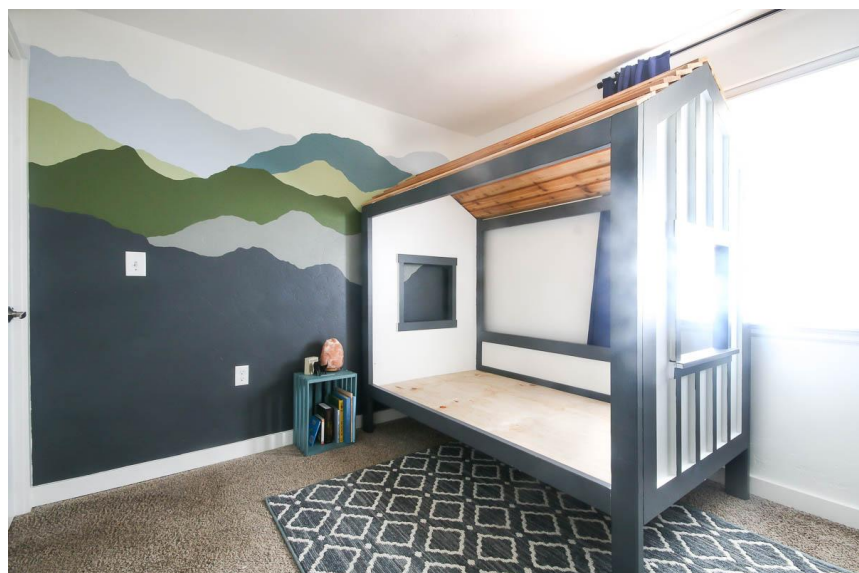
# Cabin Bed

By **Making Manzanita**

Difficulty

Moderate

This adorable twin sized cabin bed is perfect for transitioning your child from a toddler bed to a big kid bed! The bed is designed like a house and is perfect for a kid's bedroom! The build incorporates pocket hole joinery to assemble. Measurements / plans can be found under the "Extras" tab below.











# Tools

## Kreg Tools



[Kreg® Pocket-Hole Jig 720](#)

## Other Tools

- Circular Saw (cordless)
- Jigsaw
- Miter Saw
- Square
- Table Saw
- Tape Measure
- Framing Square
- Drill (cordless)
- Hammer
- Impact Driver
- Nail Gun
- Sander
- Air Compressor
- Shop Vacuum

# Materials

## Wood Products

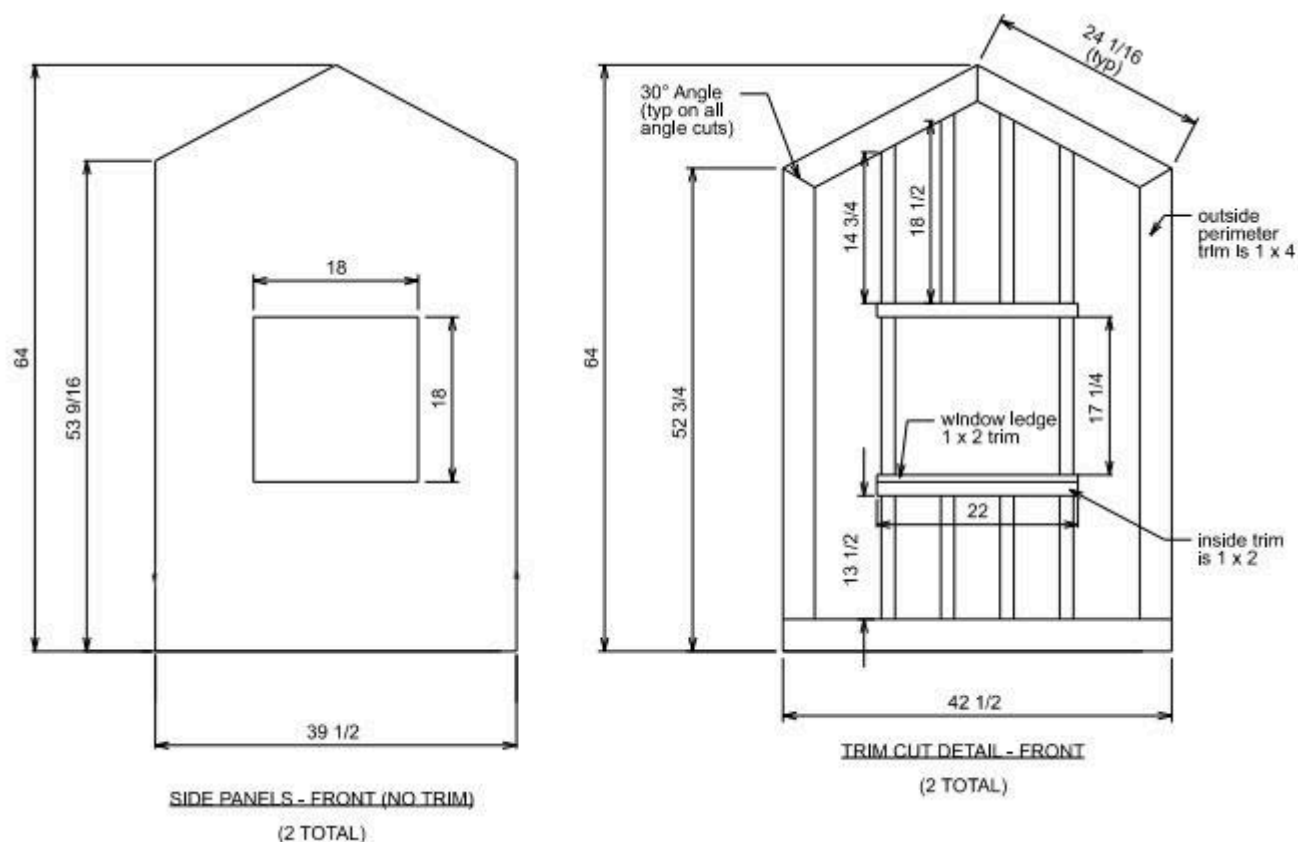
- 13** Board , 2x4 , 96"
- 3** Select Pine , 1x2 , 96"
- 3** Plywood , 3/4" Thick , Full Sheet
- 2** Primed Pine , 1x3 , 96"
- 3** Primed Pine , 1x4 , 96"
- 8** Primed Pine , 1x2 , 96"
- 12** Fence Pickets , 1x6 , 96"

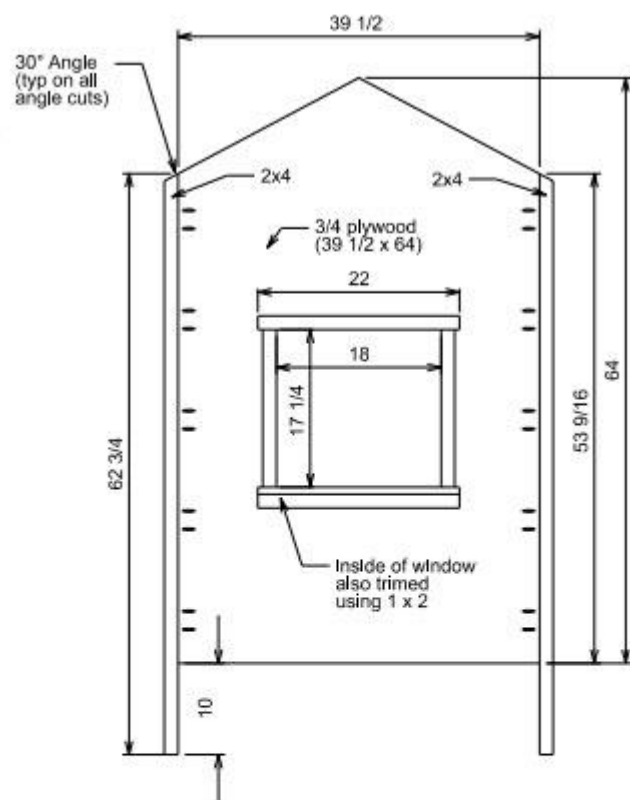
## Hardware & Supplies

- 1000** 1/4" 15 GA Finish Nails
- 1** Wood Glue
- 50** 1" 15 GA Finish Nails
- 1** Paint Brush
- 1** 4 Inch Paint Roller & Cover
- 1** Quart White Paint
- 1** Quart Gray Paint
- 1** Gallon Primer
- 100** 1 1/2" Kreg Pocket Hole Screws
- 50** 2 1/2" Kreg Pocket Hole Screws
- 100** Kreg Pocket Hole Wood Plugs
- 1** 80 Grit Sandpaper (For Orbital)
- 1** 150 Grit Sandpaper (For Orbital)

# Cut List & Parts

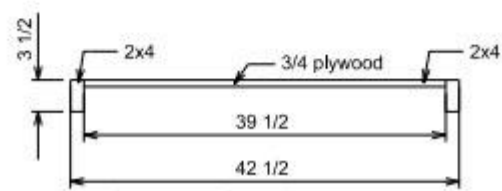
- 2 Plywood Sheets For Side Panels , 3/4" X 39 1/2" X 53 9/16" With 30 Degree Angled Cuts On One Side Up To A Middle Peak Of 64"
- 4 Outside Perimeter Trim On Edges For Side Panels , 3/4" X 3 1/2" X 49 1/4" With 30 Degree Angled Cuts At One End
- 4 Outside Perimeter Trim On Top Of Side Panels , 3/4" X 3 1/2" X 24 1/16 With 30 Degree Angled Cuts At Both Ends
- 2 Outside Perimeter Trim On Bottom Of Side Panels , 3/4" X 3 1/2" X 39 1/2"
- 8 Window Trim Top And Bottom For Side Panels , 3/4" X 1 1/2" X 22"
- 2 Window Ledge For Side Panels , 3/4" X 1 1/2" X 22" With Notched Out Corners To Fit Into Window Ledge
- 8 Inside Trim Board And Batten On Side Panel Under Window , 3/4" X 1 1/2" X 13 1/2"
- 4 Short Inside Trim Board And Batten On Side Panel Above Window , 3/4" X 1 1/2" X 14 3/4" (Short Edge) With 30 Degree Angled Cuts At Top
- 4 Long Inside Trim Board And Batten On Side Panel Above Window , 3/4" X 1 1/2" X 18 1/2" (Short Edge) With 30 Degree Angled Cuts At Top
- 8 Window Trim Side For Side Panels , 3/4" X 1 1/2" X 17 1/4"
- 4 Side Panel Edge Supports , 1 1/2" X 3 1/2" X 62 3/4" (Long Edge) With 30 Degree Angled Cuts At Top
- 2 Roof Support Pieces , 1 1/2" X 3 1/2" X 22 7/8 With 30 Degree Angled Cuts On Both Ends
- 12 Cedar Fence Pickets For Roof Panels , 5/8" X 5 1/2" X 80 1/2"
- 2 Ledger Boards (Sides) , 3/4" X 1 1/2" X 69 1/2"
- 2 Ledger Boards (Head & Foot) , 3/4" X 1 1/2" X 36 1/2"
- 3 Slats For Mattress Platform , 1 1/2" X 3 1/2" X 39 1/4"
- 1 Plywood Sheet For Back Panel , 3/4" X 8" X 73 1/2"
- 2 Top And Bottom Support On Back Panel , 1 1/2" X 3 1/2" X 73 1/2"
- 3 Support Beams For Assembling Bed And Attaching Panels , 1 1/2" X 3 1/2" X 73 1/2"





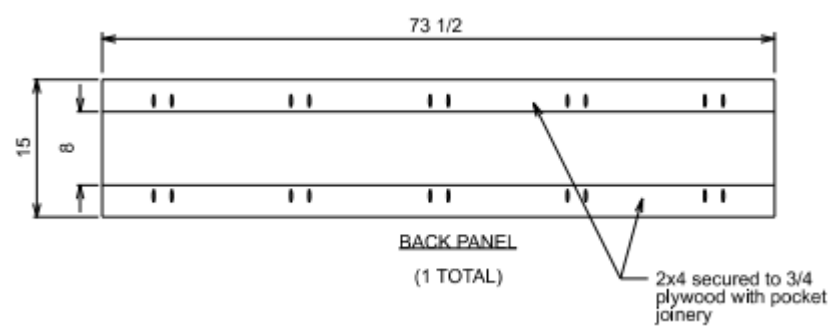
**SIDE PANELS - BACK DETAIL**

**SIDE VIEW**

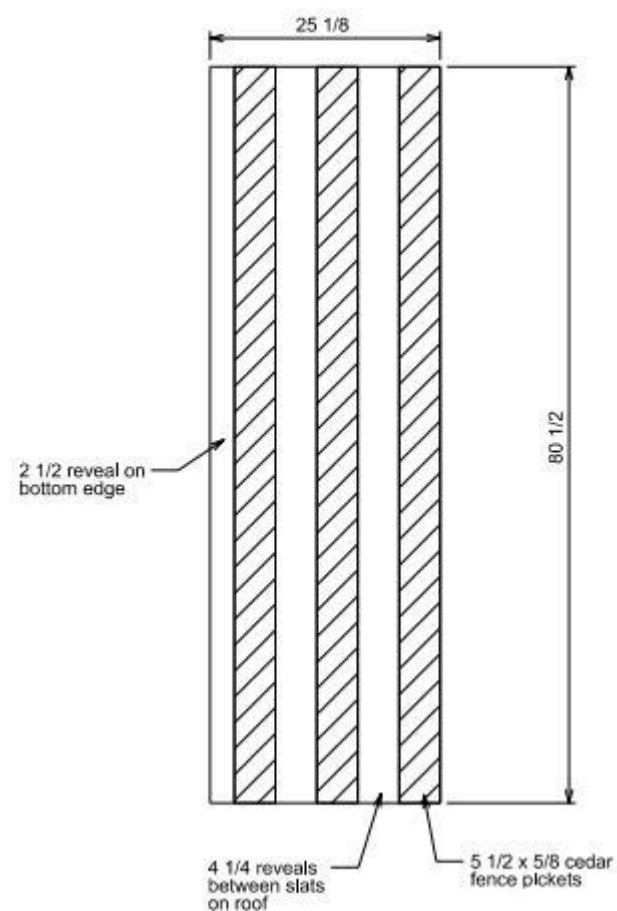


**SIDE PANELS - BACK DETAIL**

**TOP VIEW**



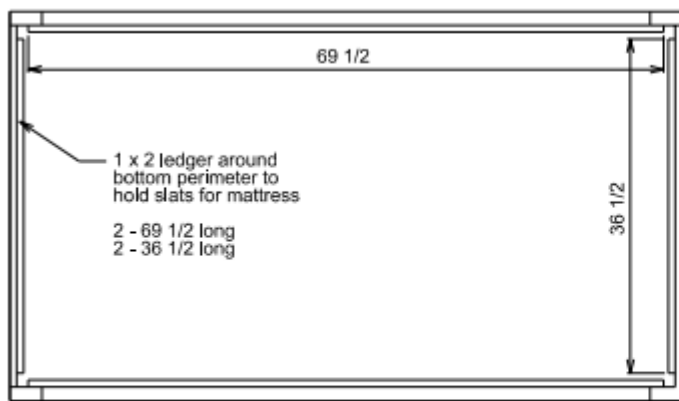
**ROOF PANELS - SIDE VIEW**  
(2 TOTAL)



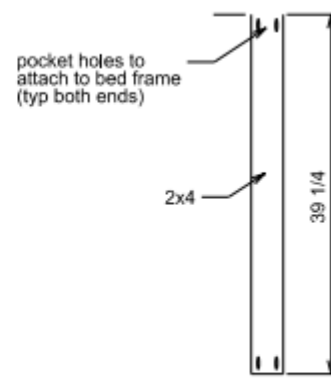
**ROOF PANELS - TOP VIEW**

**(2 TOTAL)**

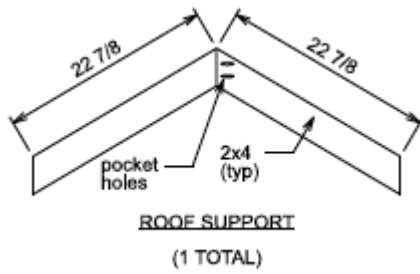




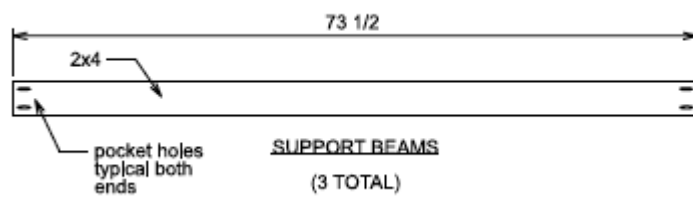
**LEDGER DETAIL**  
bed frame assembled together using pocket holes at all 4 corners



**SLAT DETAIL**  
(3 TOTAL)

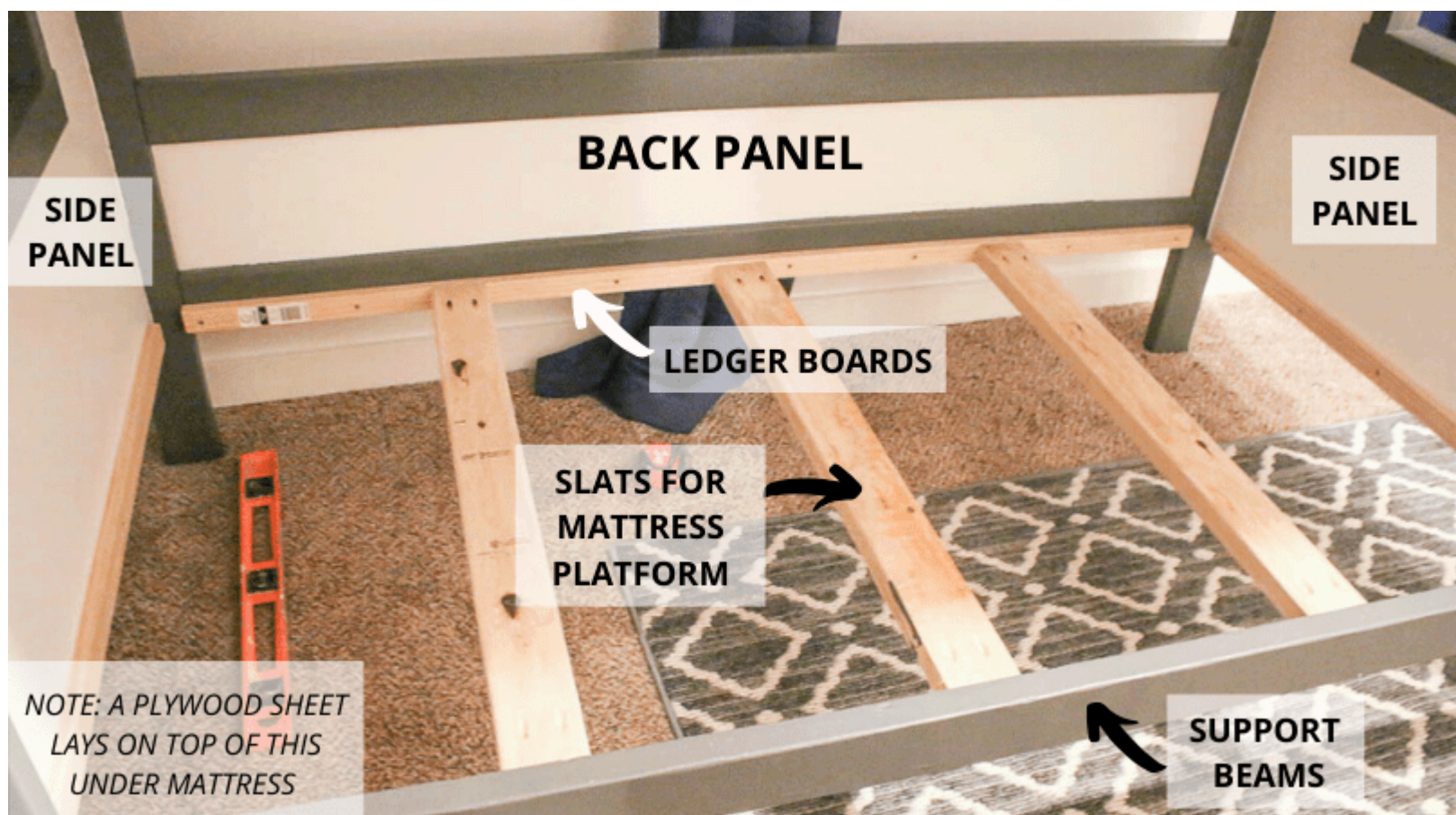


**ROOF SUPPORT**  
(1 TOTAL)



**SUPPORT BEAMS**  
(3 TOTAL)





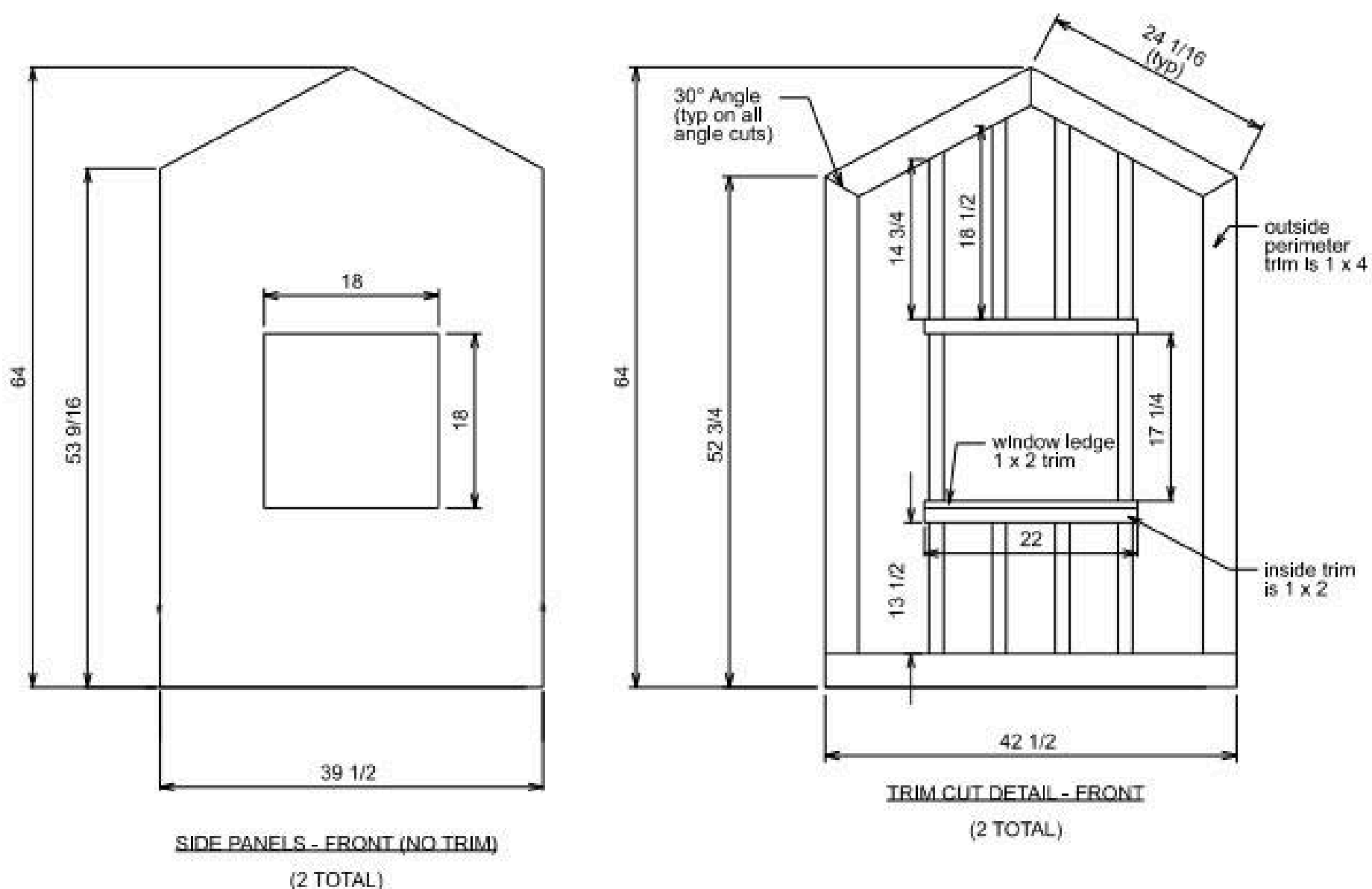


# Directions

1

## Cut & assemble side panels

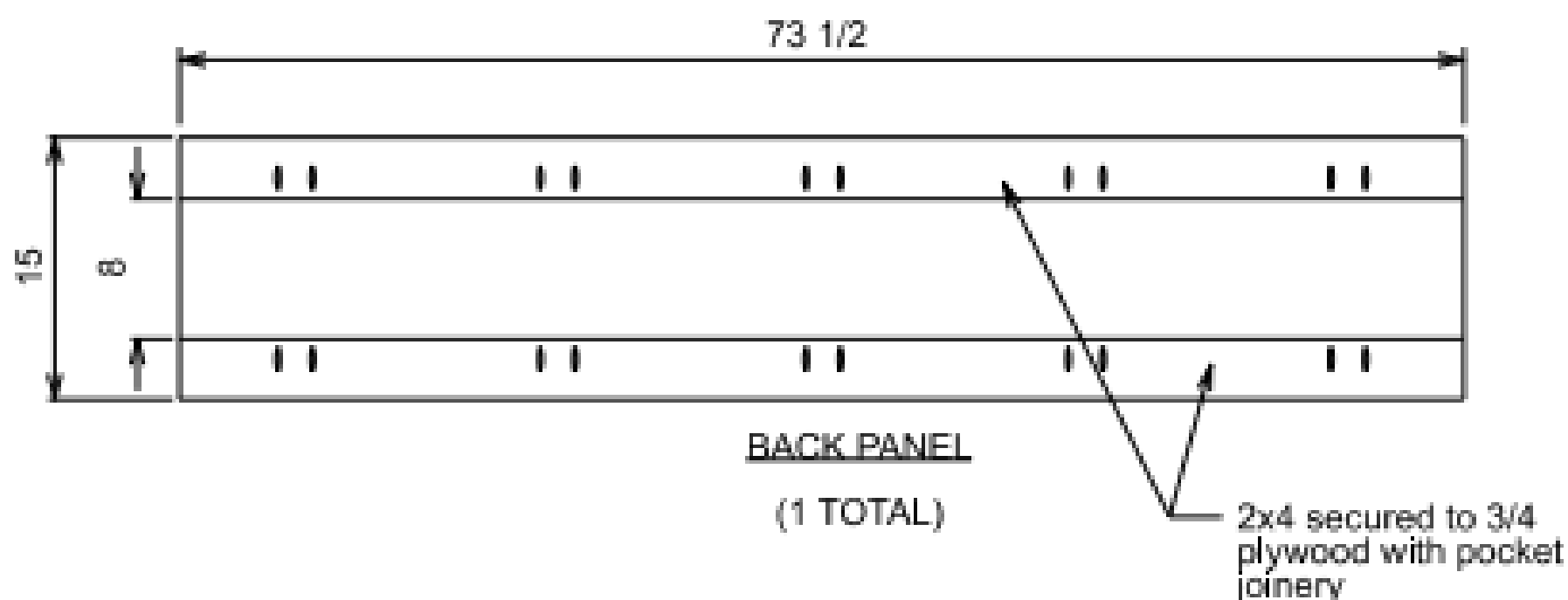
Cut 2 side panels out of 3/4 inch plywood with table saw & jig saw. Cut hole for window in each side panel with jig saw. Cut all trim pieces to size and attach as shown in plans with wood glue and finish nails.



2

## Cut & assemble back panel

Cut back panel out of 3/4 inch plywood and attach 2x4 to top and bottom with pocket hole joinery.



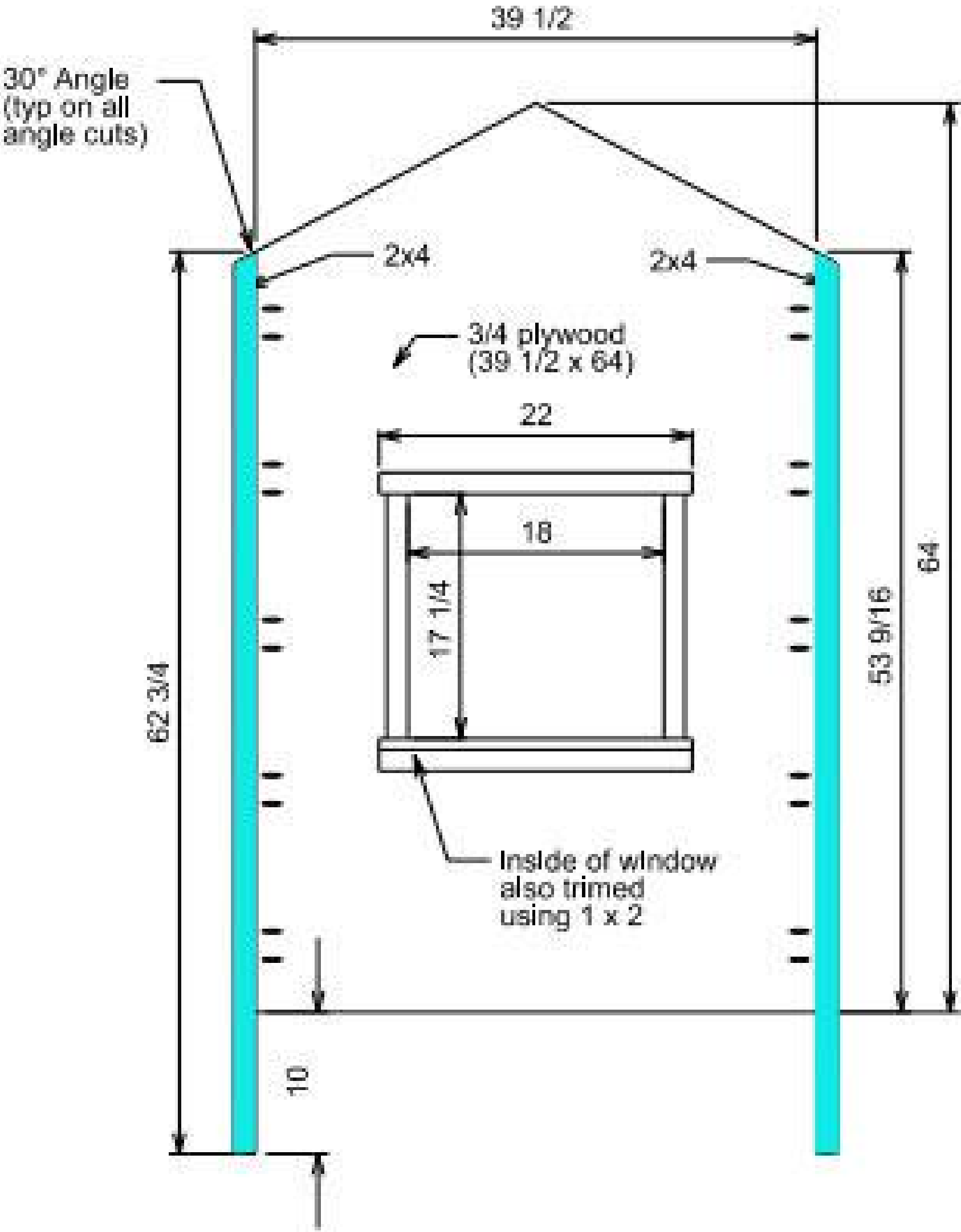
3

### Add supports to side panels

Cut 2x4s down to size with 30 degree angle cut at top. Add 2x4 supports to edges of side panels with pocket hole joinery.

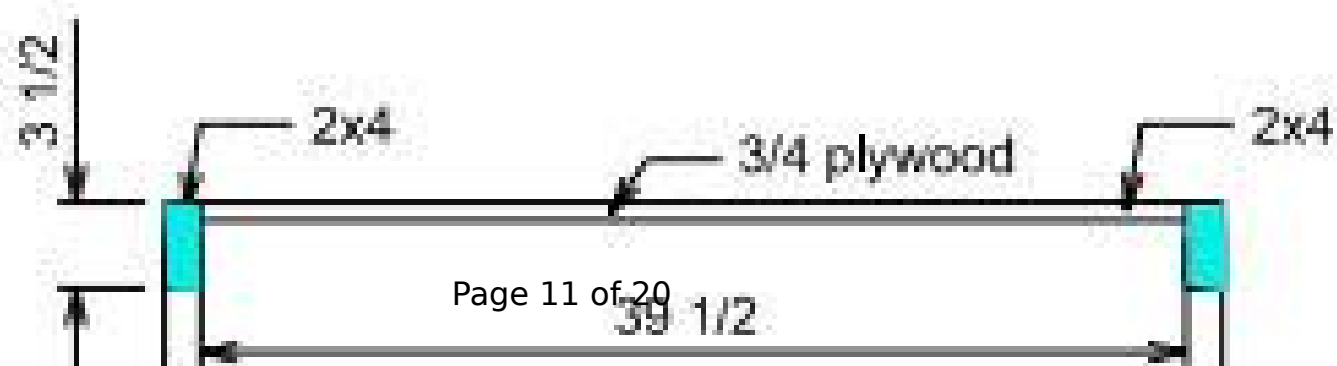
---





SIDE PANELS - BACK DETAIL

SIDE VIEW



4

### Build roof panels

Build roof panels out of cedar fence pickets stacked horizontally with 4 1/4 inch reveals. Attach together with nails. Once built, spray clear sealant on to seal the wood since these will not be painted.

---





ROOF PANELS - SIDE VIEW

(2 TOTAL)

25 1/8

80 1/2

2 1/2 reveal on  
bottom edge

**5****Build roof support**

Build a "V shaped" support piece with 30 degree angled cuts and attach together with pocket hole joinery. This will be added to the middle of the bed under the roof pickets for support.





6

### Assemble side & back panels

Connect the two side panels with 3 total 2x4 supports on each corner edges of the roof and front bottom corners of the panels with pocket hole joinery.

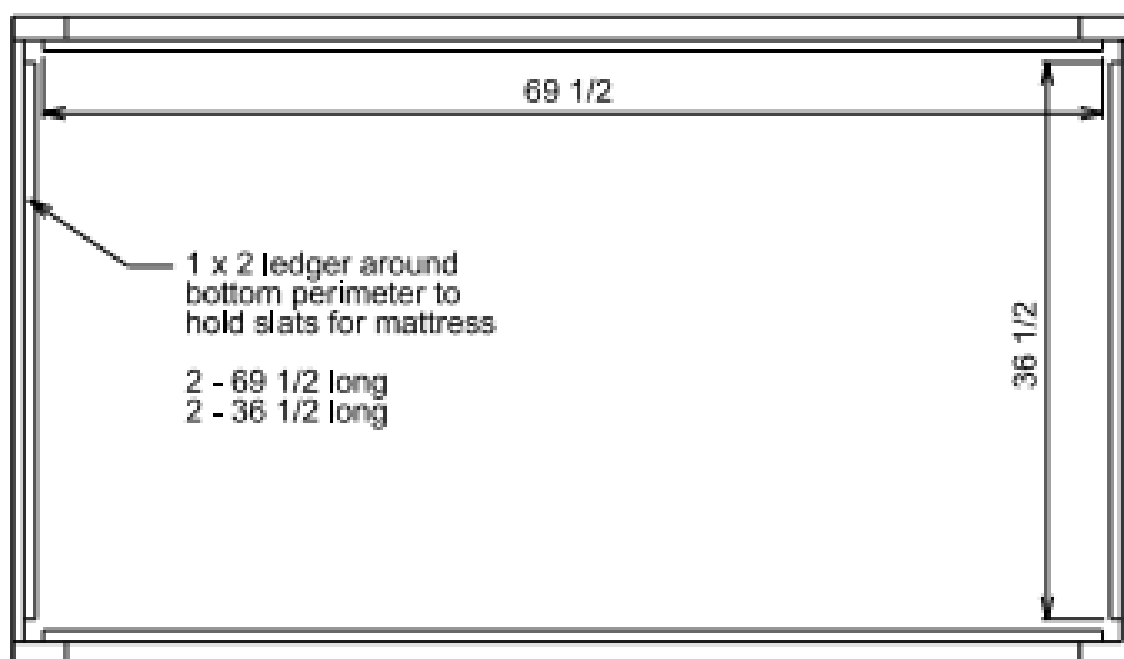




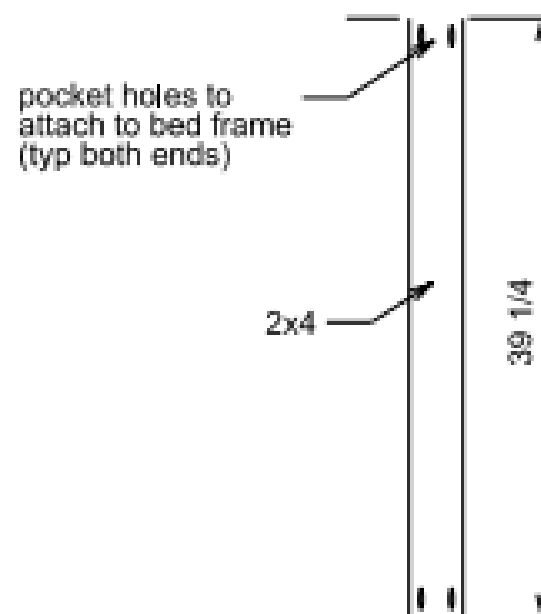
## 7

### Build bed platform

There is a 1x2 ledger board added to the inside edges to help support the plywood sheet, which will serve as the platform for the mattress. The ledger board will be screwed at the very bottom of the panels. Build bottom bed platform with 3 total 2x4 supports attached with pocket hole joinery. Lastly cut a piece of 3/4 plywood down to size and lay on top of ledger boards and 2x4 supports to create platform for mattress. Attach with finish nails.



**LEDGER DETAIL**  
bed frame assembled together  
using pocket holes at all 4 corners



**SLAT DETAIL**  
(3 TOTAL)

## 8

### Glue in pocket hole plugs

Attach pocket hole plug with wood glue to pocket holes in back panel and side panels for a finished look.



9

## Prime and paint

Prime and paint all pieces with paint of choice. We used Falling Snow for the white and Graphic Charcoal for the trim by Behr Paint.

---





**10****Fill nail holes & sand**

Fill nail holes with wood filler and sand to a smooth finish with orbital sander and 80 grit followed by 150 grit sandpaper.

